

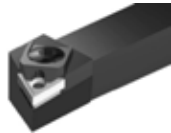
END of FINANCIAL YEAR 2018 SPECIALS on TOOLING

TURNING HOLDERS

PRICES ARE GST EXCLUSIVE

MTJN TYPE

Left Hand holders also available



TYPE	SHANK	CENTRE HEIGHT	INSERT	PRODUCT CODE	\$ EACH
MTJNR16	16 X 16	16	TNMG1604	928-3016	58.00
MTJNR20	20 X 20	20	TNMG1604	928-3020	60.00
MTJNR25	25 X 25	25	TNMG1604	928-3025	65.00
MTJNR32	32 X 32	32	TNMG1604	928-3032	95.00

CTGPR TYPE

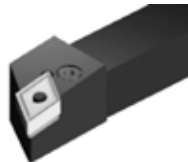
Tool holders for external turning, equipped with triangular positive inserts and strong cutting edges. Top clamp ensures good rigidity - for all application



TYPE	SHANK	CENTRE HEIGHT	INSERT	PRODUCT CODE	\$ EACH
CTGPR1212M11	12 x 12	12	TPMR110304	928-1870	45.00
CTGPR1616H11	16 x 16	16	TPMR110304	928-1874	48.00
CTGPR2020-16	20 x 20	20	TPMR160304	928-1878	65.00
CTGPR2525-16	25 x 25	25	TPMR160304	928-1884	70.00

PDJN TYPE

Left Hand holders also available



- Turning and profiling tool holder with rhombic negative double side insert (angle 55°) with strong cutting edge. Lever lock ensures good rigidity and chip flow in roughing applications. From roughing to finishing. Takes DNMG insert.

TYPE	SHANK	CENTRE HEIGHT	INSERT	PRODUCT CODE	\$ EACH
PDJNR	20 X 20	20	DNMG1506	928-3172	65.00
PDJNR	25 X 25	25	DNMG1506	928-3174	80.00

STGCR TYPE

- External tool holder for general turning application, takes triangular positive inserts, centre screw ensures good rigidity and chip flow. Takes TCMT insert.



TYPE	SHANK	CENTRE HEIGHT	INSERT	PRODUCT CODE	\$ EACH
STGCR0808	8 X 8	8	TCMT0902	928-3050	30.00
STGCR1010	10 X 10	10	TCMT0902	928-3052	40.00
STGCR1212F11	12 X 12	12	TCMT1102	928-3054	45.00
STGCR1616	16 X 16	16	TCMT1102	928-3056	50.00
STGCR2525	25 X 25	25	TCMT16T304	928-3060	75.00

THREADING TOOL (EXTERNAL)



TYPE	SHANK	CENTRE HEIGHT	INSERT	PRODUCT CODE	\$ EACH
SER1212H11	12 x 12	12	11ER	928-3410	48.00
SER1616H16	16 x 16	16	16ER	928-3420	56.00
SER2020H16	20 x 20	20	16ER	928-3424	65.00
SER2525H16	25 x 25	25	16ER	928-3430	75.00

BORING HOLDERS STFCR TYPE

- Multipurpose boring bar equipped with triangular positive insert.
- Centre screw ensures good rigidity and chip flow.
- Internal boring bar for general applications, roughing, semi-finishing and finishing.



TYPE	SHANK	CENTRE HEIGHT	INSERT	PRODUCT CODE	\$ EACH
S12M-STFCR11	12	12	TCMT1102	927-1230	65.00
S16R-STFCR11	16	16	TCMT1102	927-1232	65.00
S20S-STFCR11	20	20	TCMT1102	927-1234	70.00
S25T-STFCR16	25	25	TCMT1603	927-1236	75.00
S32U-STFCR16	32	25	TCMT1604	927-1238	90.00

BORING HOLDERS MTFN TYPE

- Internal turning and profiling boring bar equipped with triangular negative double side insert with strong cutting edge. The centre pin and top clamp ensure good rigidity and stability in roughing applications.
- Internal boring bar for general applications, roughing, semi-finishing and finishing.
- Specially recommended for cermet, ceramic and K10, P10 grade inserts.



TYPE	SHANK	CENTRE HEIGHT	INSERT	PRODUCT CODE	\$ EACH
S20MTFNR16	20	20	TNMG1604	927-1220	90.00
S25RMTFNR16	25	25	TNMG1604	927-1225	90.00

BORING HOLDERS SCLCR TYPE

- Multipurpose boring bar equipped with rhombic positive insert.
- Centre screw ensures good rigidity and chip flow.
- Takes CCMT insert.



TYPE	SHANK	CENTRE HEIGHT	INSERT	PRODUCT CODE	\$ EACH
S08H-SCLCR06	8	8	CCMT06	927-1208	35.00
S10K-SCLCR06	10	10	CCMT06	927-1210	35.00
S12M-SCLCR06	12	12	CCMT06	927-1212	48.00
S16Q-SCLCR06	16	16	CCMT06	927-1216	50.00

*ALL PRICES ARE EXCLUSIVE OF GST.

PICTURES MAY VARY FROM ACTUAL PRODUCT.

SPECIFICATIONS MAY CHANGE WITHOUT NOTICE. OFFERS VALID UNTIL JUNE 30TH 2018.

3Pc LATHE TOOL SET



- Left and Right Hand Turning
- Boring Bar
- 10pc insert

SHANK (MM)	PRODUCT CODE	\$ EACH
10 x 10	929-4010	150.00
12 x 12	929-4012	178.00
16 x 16	929-4016	189.00
20 x 20	929-4020	195.00

720-4290 6PC SET
HSS-M2 UNIVERSAL SHANK
SIZES : 12,14,16,18,20,22mm
Pins - 2pc
\$189.00 +Gst



**ANNULAR CUTTERS-
Depth of Cut 50mm**

****INDIVIDUAL
CUTTERS
AVAILABLE
AS WELL**

720-5220 8PC SET
TCT - UNIVERSAL SHANK
SIZES : 14,16,18,20,22, 24mm
Pins - 2pc
\$290.00 +Gst



PARTING TOOL KIT

CONSISTS OF BLOCK, BLADE, INSERT AND SPANNER



SHANK (MM)	C/HEIGHT (MM)	BLADE SIZE (MM)	PRODUCT CODE	\$ EACH
12	12	19 x 3	928-5560	140.00
16	16	26 x 3	928-5570	140.00
19	19	26 x 3	928-5580	140.00

5Pc LATHE TOOL SET

- Left and Right Hand Turning Tool
- Boring Bar,
- Internal and External Thread

SHANK (MM)	PRODUCT CODE	\$ EACH
12 x 12	929-4054	180.00
16 x 16	929-4056	200.00
20 x 20	929-4058	230.00



DRILL SET



		PRODUCT CODE	\$ EACH
25pc HSS-M2	1-13mm x 0.5	220-1020	89.00
25pc HSS-M35	1-13mm x 0.5	220-1022	99.00
29pc HSS-M2	1/16 - 1/2 inches	220-0060	95.00

TAPER SHANK DRILL



	PRODUCT CODE	\$ EACH
10pc set	260-5010	190.00

HSS-M2 INDUSTRIAL QUALITY

SIZES : 14, 15, 16, 17, 18, 19, 20,21, 22 & 23mm

MILLING CUTTERS



DIAMETER (MM)	PRODUCT CODE	\$ EACH
50 x 22	934-1020	75.00
63 x 22	934-1025	85.00
100 x 32	934-1040	150.00
125 x 40	934-1050	165.00

* above cutters does not include inserts
* inserts are optional (extra)

MILLING CUTTER SET



DIAMETER (MM)	PRODUCT CODE	\$ EACH
63 x 22	934-1002	170.00
80 x 27	934-1004	185.00

* include inserts
* takes APKT inserts

COUNTER SINK SETS

284-4000 7PC SET
1/4 - 1" SINGLE FLUTE
\$65.00 +Gst



284-5000 5PC SET
1/4 - 1" THREE FLUTE
\$60.00 +Gst



PRICES ARE GST EXCLUSIVE

ANGLE PLATES

950-3020	3" x 2.5" x 3"	\$ 25.00 +GST
950-3025	3.5" x 3" x 2.5"	\$ 30.00 +GST
950-3045	8" x 6" x 5"	\$ 65.00 +GST
950-3050	9" x 7" x 6"	\$ 78.00 +GST
950-3055	10" x 8" x 6"	\$ 95.00 +GST
950-3065	16" x 12" x 9"	\$ 348.00 +GST



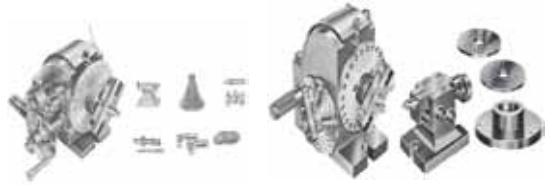
CLAMP KITS 58pc

940-2040	10mm Slot, 8mm Stud	\$ 48.00 +GST
940-2050	12mm Slot, 10mm Stud	\$ 78.00 +GST
940-2060	14mm Slot, 12mm Stud	\$ 99.00 +GST
940-2070	16mm Slot, 12mm Stud	\$ 99.00 +GST
940-2075	16mm Slot, 14mm Stud	\$ 120.00 +GST
940-2085	20mm Slot, 18mm Stud	\$ 199.00 +GST



DIVIDING HEAD

957-2010	Dividing head BS-0	\$ 399.00 +GST
957-2020	Dividing head BS-1	\$ 499.00 +GST
957-2030	Dividing head BS-2 (universal)	\$ 799.00 +GST



ROTARY TABLES

(Horizontal/Vertical)

958-0006	6"	\$ 299.00 +GST
958-0008	8"	\$ 399.00 +GST
958-0010	10"	\$ 540.00 +GST
958-0012	12"	\$ 720.00 +GST
958-0016	16"	\$ 1295.00 +GST

*Different size chucks available



DRILL CHUCKS

916-0004	0-13mm JT6	\$ 39.00 +GST
916-0009	3-20mm JT3	\$ 65.00 +GST
916-5041	1-13mm K/LESS	\$ 49.00 +GST
916-5062	3-16mm K/LESS	\$ 55.00 +GST

*Different Arbors available to suit your machine



BORING HEAD SET

926-1020	2" 9pc set	\$ 145.00 +GST
926-1030	3" 12pc set	\$ 220.00 +GST
926-1035	4" 7pc set	\$ 364.00 +GST

*Different taper arbors available



**LATHE CHUCK
3 JAW RECESS**

960-3008	80mm	\$ 95.00 +GST
960-3010	100mm	\$ 120.00 +GST
960-3012	125mm	\$ 150.00 +GST
960-3020	200mm	\$ 175.00 +GST
960-3025	250mm	\$ 250.00 +GST
960-3031	315mm	\$ 299.00 +GST



**LATHE CHUCK
4 JAW RECESS**

960-4008	80mm	\$ 90.00 +GST
960-4010	100mm	\$ 95.00 +GST
960-4012	125mm	\$ 100.00 +GST
960-4016	160mm	\$ 120.00 +GST
960-4020	200mm	\$ 150.00 +GST
960-4025	250mm	\$ 199.00 +GST
960-4030	300mm	\$ 250.00 +GST
960-4035	350mm	\$ 299.00 +GST



PIPE CENTRES

913-6022	MT2x2.5"	\$ 99.00 +GST
913-6035	MT3x5"	\$ 149.00 +GST
913-6045	MT4x5"	\$ 190.00 +GST
913-6046	MT4x6"	\$ 250.00 +GST
913-6053	MT4x8"	\$ 299.00 +GST
913-6058	MT5x8"	\$ 449.00 +GST



TOOL SETTING HOLDER

939-1030	BT30	\$ 140.00 +GST
939-1040	BT40	\$ 165.00 +GST



BT - TOOLING

920-5000	BT30-ER11-50	\$ 50.00 +GST
920-5010	BT30-ER16-50	\$ 50.00 +GST
920-5020	BT30-ER20-60	\$ 60.00 +GST
920-5030	BT30-ER25-50	\$ 90.00 +GST
920-5035	BT30-ER32-60	\$ 90.00 +GST
920-5040	BT30-ER40-70	\$ 90.00 +GST
920-5080	BT40-ER32-70	\$ 99.00 +GST
920-5085	BT40-ER32-100	\$ 99.00 +GST
920-5095	BT40-ER40-80	\$ 120.00 +GST
920-5100	BT40-ER50-90	\$ 150.00 +GST
920-5105	BT50-ER32-100	\$ 170.00 +GST
920-5130	BT50-ER40-150	\$ 199.00 +GST

More Tooling available ex-stock



MAGNETIC CHUCK RECTANGULAR

991-1014	150 x 300mm	\$ 295.00 +GST
991-1026	150x 460mm	\$ 460.00 +GST



MAGNETIC CHUCK ROUND

991-1200	100mm Dia	\$ 295.00 +GST
991-1204	160mm Dia	\$ 350.00 +GST
991-1208	200mm Dia	\$ 450.00 +GST
991-1212	250mm Dia	\$ 490.00 +GST



REVOLVING (LIVE) CENTRE

910-3031	MT1	\$ 39.00 +GST
910-3032	MT2	\$ 49.00 +GST
910-3033	MT3	\$ 59.00 +GST
910-3034	MT4	\$ 89.00 +GST
910-3035	MT5	\$ 129.00 +GST
910-3036	MT6	\$ 375.00 +GST



MILLING CHUCK SETS

920-5420	BT30-ER32-60 6pc	\$ 129.00 +GST
920-5410	BT30-ER32-60 11pc	\$ 169.00 +GST
920-5830	BT40-ER32-70 6pc	\$ 190.00 +GST
920-5840	BT40-ER40-80 7pc	\$ 295.00 +GST
920-5848	BT50-ER40-80 7pc	\$ 295.00 +GST



*ALL PRICES ARE EXCLUSIVE OF GST.

PICTURES MAY VARY FROM ACTUAL PRODUCT.

SPECIFICATIONS MAY CHANGE WITHOUT NOTICE. OFFERS VALID UNTIL JUNE 30TH 2018.

PRICES ARE GST EXCLUSIVE

**OFFSET VICE
FABRICATED STEEL VICE**



996-7020 4" Opening 120mm \$ 99.00 +GST
 996-7028 6" Opening 170mm \$198.00 +GST
 996-7032 8" Opening 220mm \$290.00 +GST

BENCH VICE

5
Year
Warranty



* steel jaw serrated for non slip
 * pipe jaws for round work piece
 * body made of ductile cast iron

996-7074 4" opening 125mm \$ 95.00 +GST
 996-7076 6" opening 175mm \$ 160.00 +GST
 996-7078 8" opening 225mm \$ 270.00 +Gst

DRILL VICE



* made of high grade cast iron
 * precision ground base & bed
 * smooth jaw movement

996-6015 4" opening 100mm \$ 95.00 +GST
 996-6023 6" opening 150mm \$140.00 +GST

PRECISION 3 WAY VICE



* manufactured from high grade cast iron
 * 3 way mounting option
 * precision ground
 * fine acme thread screw

996-6010 4" opening 100mm
 \$ 129.00 +GST

DRILL VICE



* manufactured from high grade cast iron
 * precision ground base & bed
 * smooth jaw movement
 * fine acme thread screw
 * prismatic jaws for gripping round work piece

996-6022 5" opening 110mm
 \$130.00 +GST

MILLING VICE



996-3120 , Verti lock 6"
 Swivel Base \$345 +Gst

BENCH VICE - EXTRA HEAVY DUTY



* steel jaw
 * swivel base
 * 5 year warranty
 * with pipe jaws
 * vice body made of ductile cast iron

996-7086 6" opening 175mm
 \$ 250.00 +GST

SWIVEL ANGLE VICE



996-7010
 50mm 2 way
 Opening 50mm

\$79 +Gst

996-7012
 100mm 2 way
 Opening 100mm

\$245 +Gst

MILLING VICE SUPER PRECISION



996-3150
 4"
 Opening 100mm

\$269 +Gst

996-3160
 6"
 Opening 150mm

\$449 +Gst

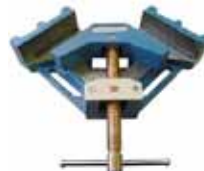
SELF CENTERING VICE



996-7250
 4"
 Opening 100mm

\$249 +Gst

WELDING VICE



996-7120

Jaw width : 120mm
 Jaw opening : 120mm
 work piece @ 90degrees

\$89 +Gst

SWIVEL ANGLE VICE



996-5018
 125mm 3 way
 Opening 125mm

\$299 +Gst

HYDRAULIC VICE

996-3300
 150mm
 Opening 320mm

\$499 +Gst



BENCH VICE FABRICATED



996-7062 4" Opening 100mm \$59 +Gst

996-7066 6" Opening 150mm \$99 +Gst

*ALL PRICES ARE EXCLUSIVE OF GST.

PICTURES MAY VARY FROM ACTUAL PRODUCT.

SPECIFICATIONS MAY CHANGE WITHOUT NOTICE. OFFERS VALID UNTIL JUNE 30TH 2018.